

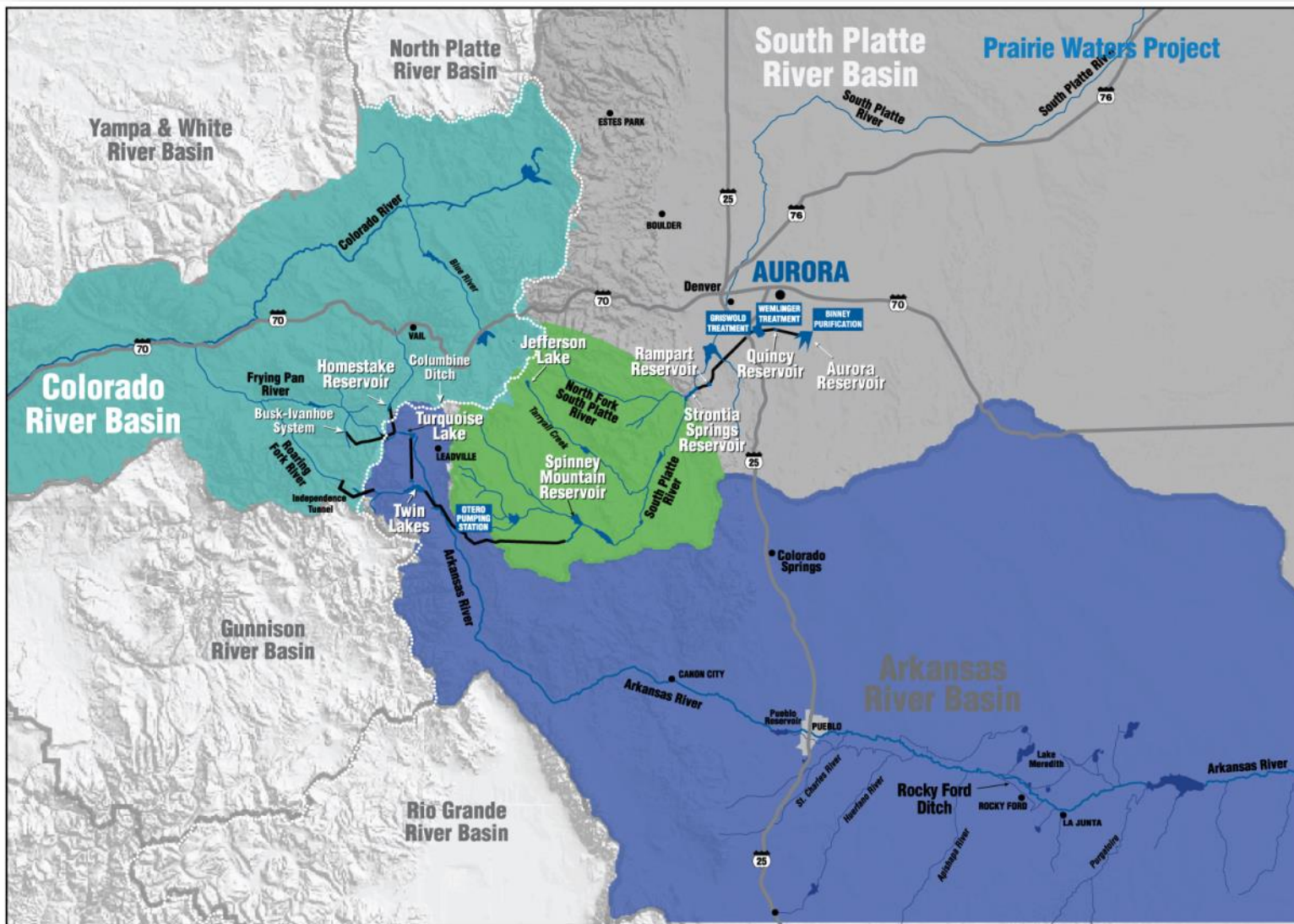
# Town Hall Meeting

## Drought Stage I Declared for Aurora

**AURORA WATER CONSERVATION**



**AURORA  
WATER**



- 25% Colorado River Basin
- 25% Arkansas River Basin
- 50% S. Platte River Basin
- 12 reservoirs across the state
- Water can travel up to 180 miles

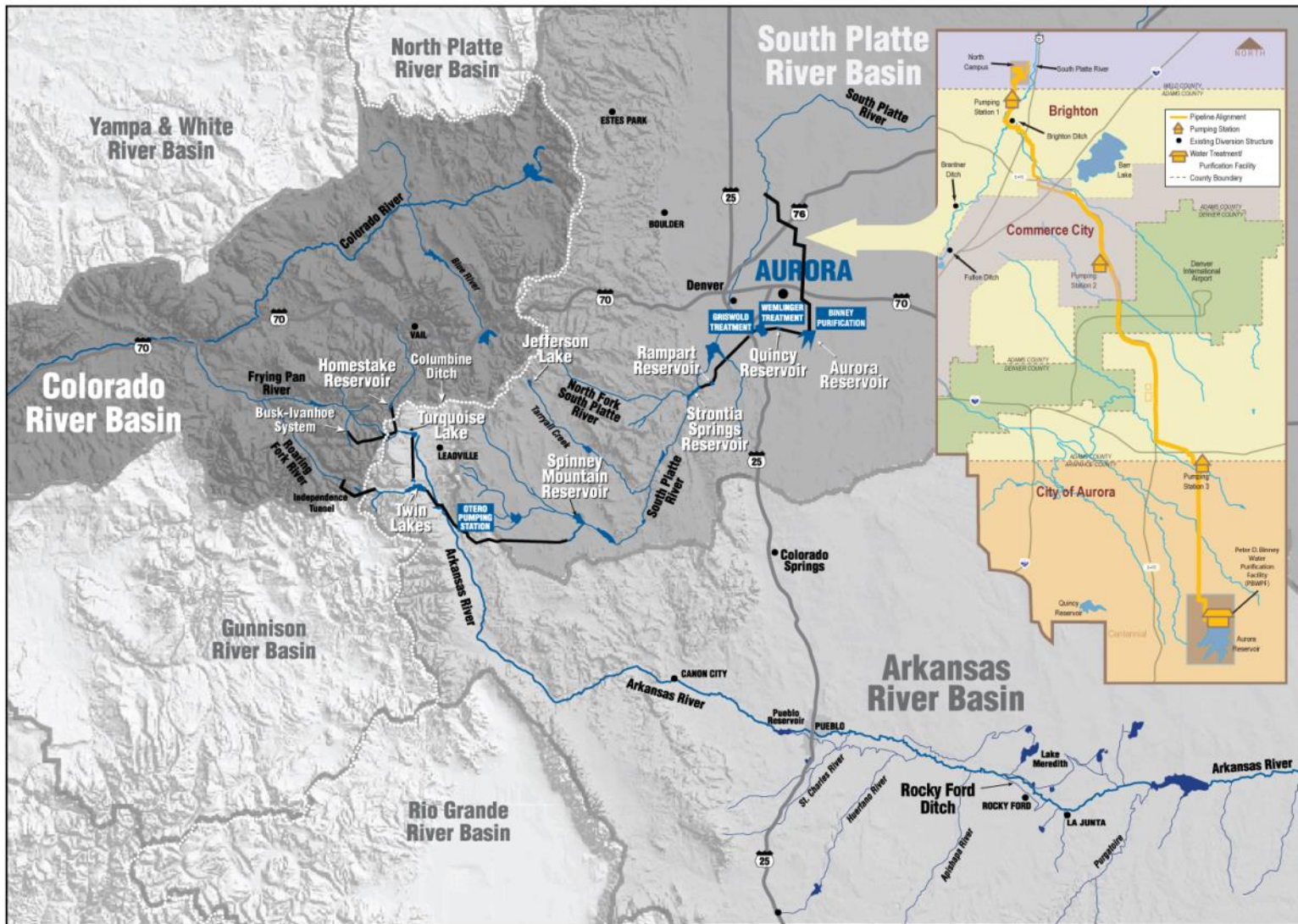


AURORA WATER ♦ Water Supply

— Aqueducts, diversion tunnels, pipelines — Streams, canals, reservoirs  
 — Major roads, highways — Continental Divide



AURORA  
WATER



**Prairie Waters System built in 2010 to recapture and reuse water from the South Platte River.**



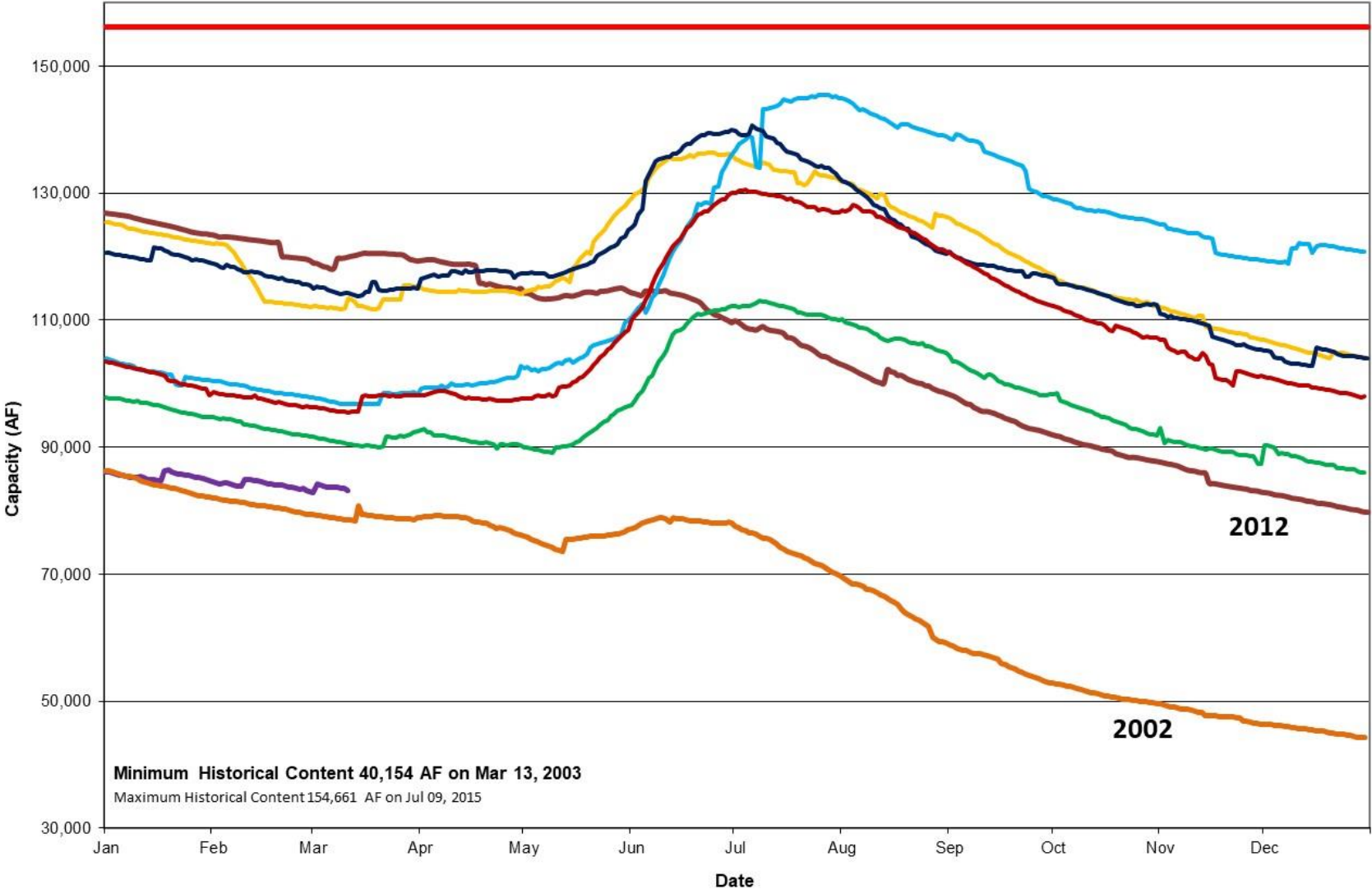
**AURORA WATER** ♦ **Water Supply**

— Aqueducts, diversion tunnels, pipelines — Streams, canals, reservoirs  
 — Major roads, highways — Continental Divide



**AURORA  
 WATER**

### Aurora Water - Last 5-Year System Storage

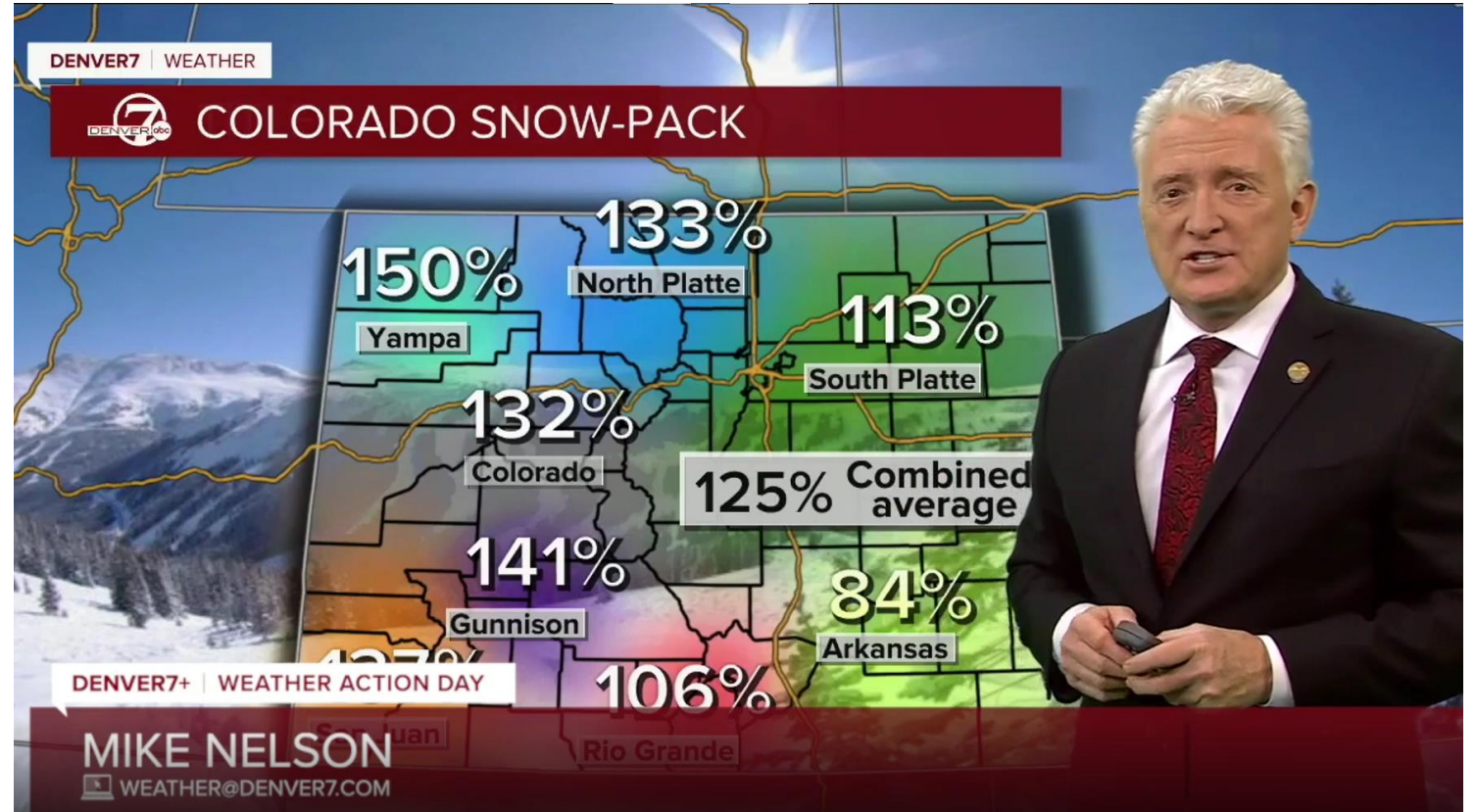


Minimum Historical Content 40,154 AF on Mar 13, 2003  
Maximum Historical Content 154,661 AF on Jul 09, 2015

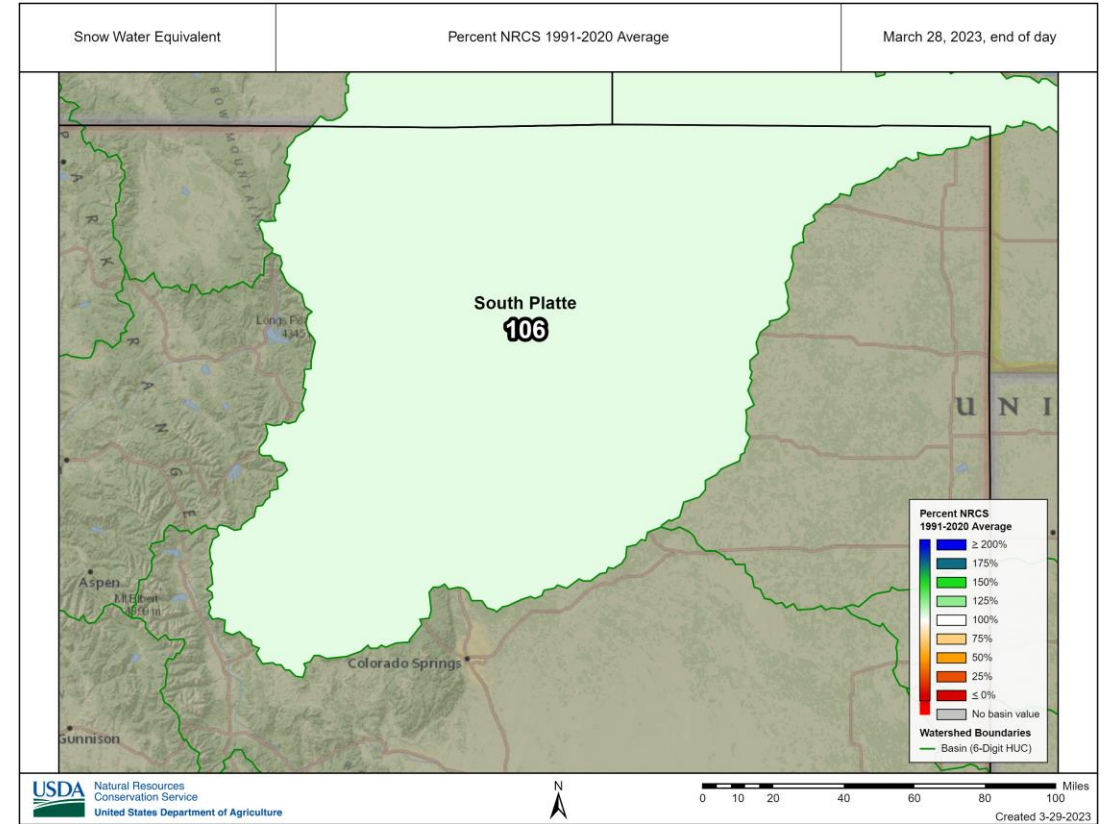
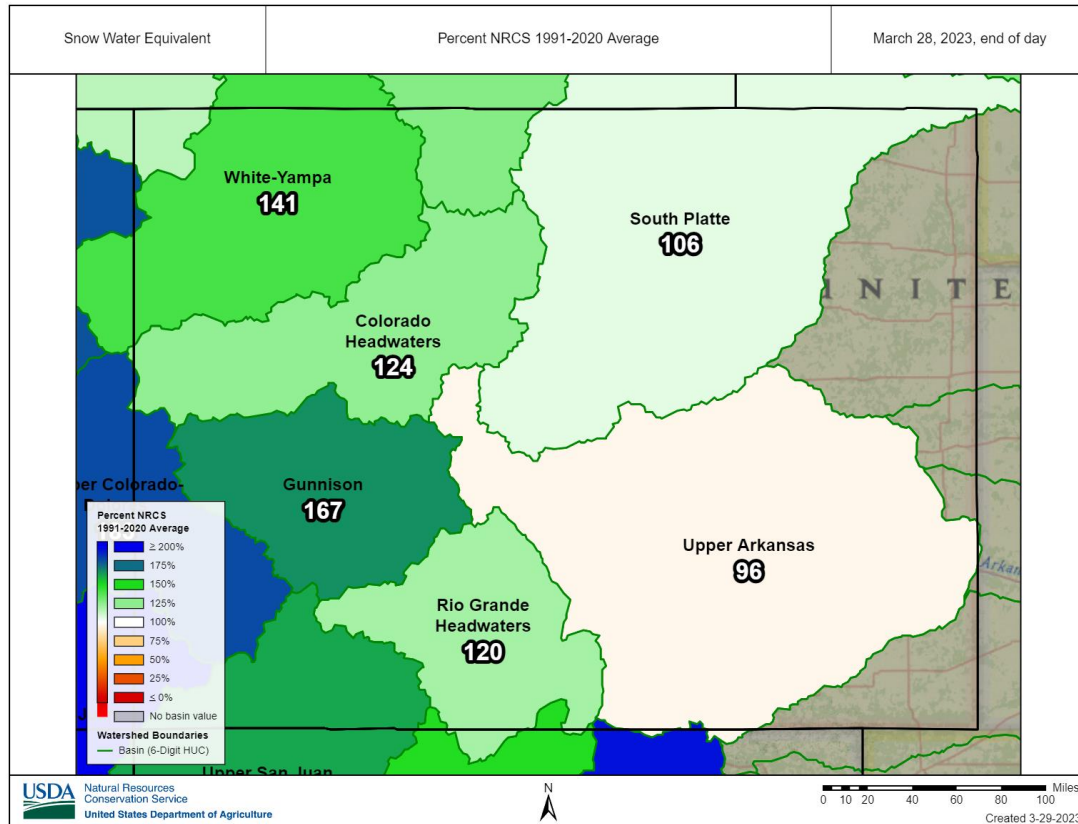
System Capacity 2012 2018 2019 2020 2021 2022 2023 2002

# How can we be in drought?

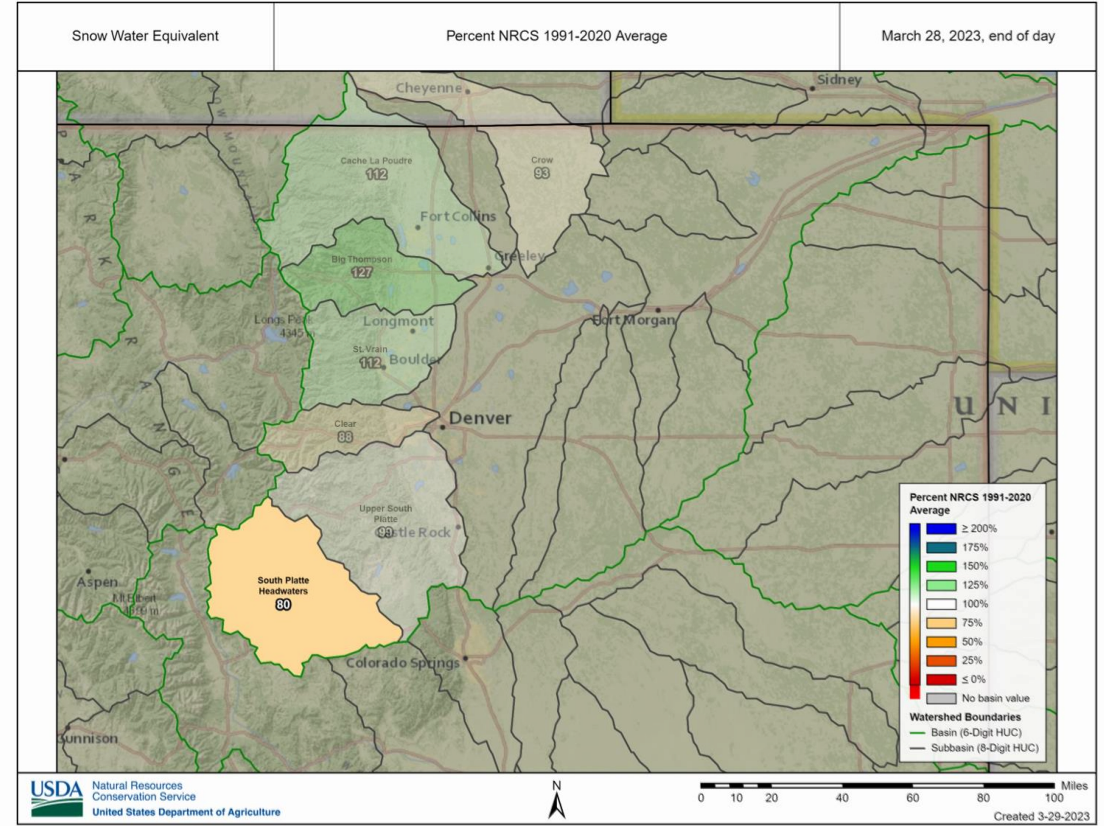
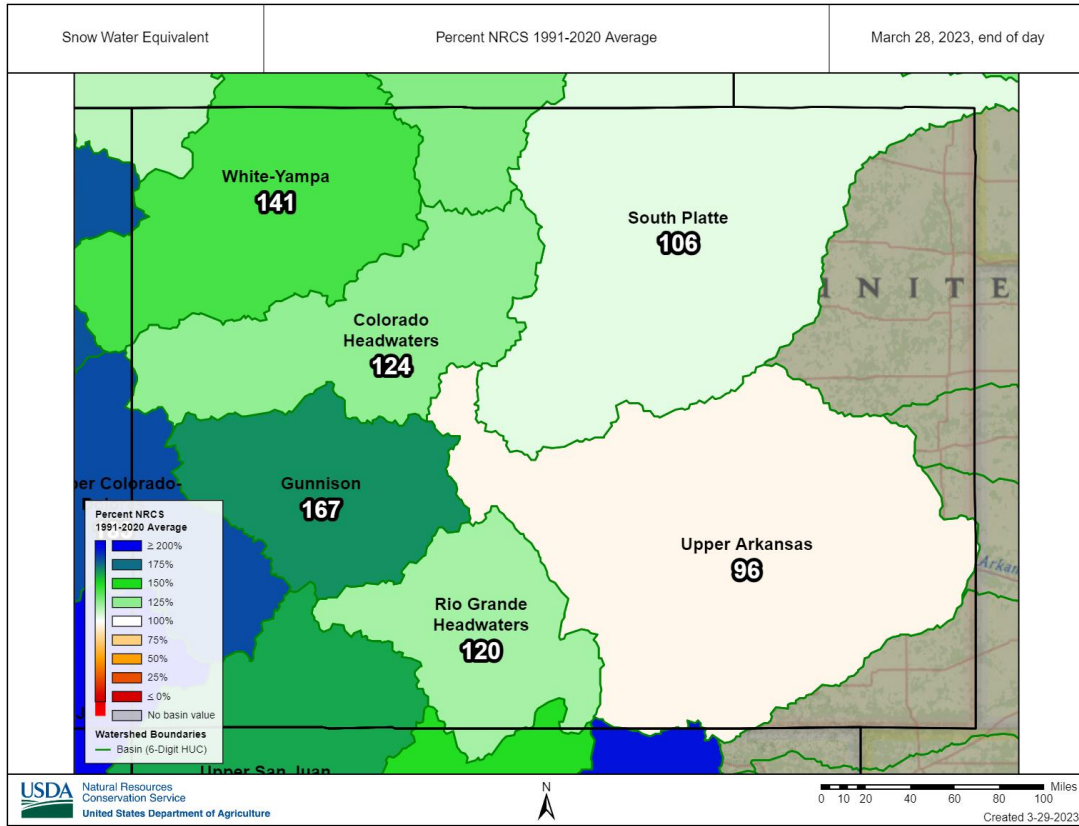
- Media reports on a statewide/basin wide averages
  - 114 snow measurement stations across Colorado
  - Aurora relies on is only 16 of the SNOTEL sites



# Snowpack to fill reservoirs



# Snowpack to fill reservoirs



# Current Triggers

<b>Water Availability Stage Conditions and Demand Reduction Recommendation</b>				
<b>Water Availability Stage</b>	<b>NORMAL</b>	<b>Stage I SEVERELY DRY</b>	<b>Stage II EXCEPTIONALLY DRY</b>	<b>Stage III EMERGENCY CONDITIONS</b>
<b>Trigger - Months of supply based on current demand</b>	Above 30 months	30-25 months	24-13	12 months or less
<b>Demand Reduction Recommendation (outdoor use only)</b>	0%	20%	50%	100%



# Water Management Plan Implementation

- “Water Availability” Resolution from City Council
- Use of “Water Availability” Stages
  - Limits outdoor water use only - Irrigation primarily
    - Day per week restrictions
    - Enforceable through fines attached to water bill
  - Can result in surcharges to rates



AURORA  
WATER

# Aurora Declares Drought starting May 1

## Stage 1 Drought

- Watering maximum 2 days/week
- Variance program allows flexible irrigation scheduling as long as efficiency standards are met (includes a 20% reduction goal)
- Turf grass may go dormant (not dead)
- No fines for grass dormancy



# Watering Days

<b>Stage I – Severely Dry – Watering Schedule</b> <i>drought surcharge in effect per City Ordinance Section 138-223 - Water rates and charges</i>						
Sun	Mon	Tue	Wed	Thurs	Fri	Sat
<b>EVEN</b> Address  Residential customers	<i>Additional City needs</i>	OTHER  Multi-family, HOA, Non-residential	<b>ODD</b> Address  Residential customers	<b>EVEN</b> Address  Residential customers	OTHER  Multi-family, HOA, Non-residential	<b>ODD</b> Address  Residential customers



AURORA  
WATER



# Drought Surcharges – Stage I

## How it works

- Winter Quarter Average (WQA) – Dec-Jan-Feb usage average
- Only usage above WQA+10% is subject to the surcharge
- 10% added to provide a small cushion
- A Minimum WQA floor of 5,000 gallons is established for residential customers this helps snowbirds and small families
- Irrigation customers are surcharged on all usage

# Drought Surcharges – Stage I

	Stage 1	Stage 2	Stage 3
<b>Residential Surcharges</b>			
Up to 110% WQA	\$0.00	\$0.00	\$4.20
Over 110% WQA	\$1.95	\$7.60	\$12.60
<b>Commercial Surcharges</b>			
Up to 110% WQA	\$0.00	\$0.00	\$4.20
Over 110% WQA	\$1.95	\$7.60	\$12.60
<b>Multifamily Surcharges</b>			
Up to 110% WQA	\$0.00	\$0.00	\$4.20
Over 110% WQA	\$1.95	\$7.60	\$12.60
<b>Irrigation Surcharges</b>			
All Usage	\$1.95	\$7.60	\$25.20

# Outdoor Water Use & Best Practices



AURORA  
WATER

# Variance Program

- Allows a property to run irrigation 7 days per week (**each zone max. 2 days/week**)
- Monthly reports comparing actual usage to a recommended use:
  - Adjusted to size of landscape and weather
  - Must stay under 120% of year-to-date recommended
- Drought Stage I
  - 20% outdoor usage reduction factored into recommended use

## Your HOA

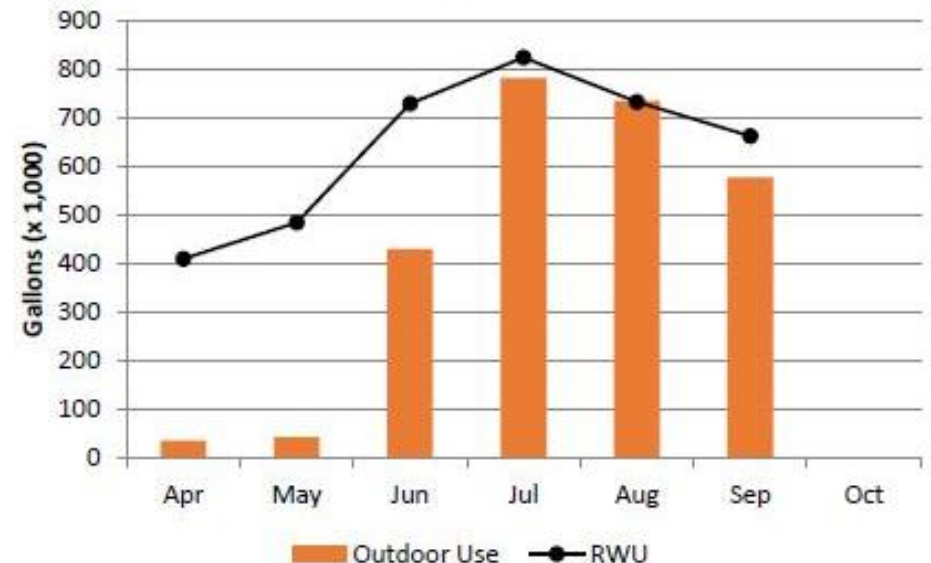
is participating in the  
**LARGE PROPERTY WATER  
VARIANCE PROGRAM**



AURORA  
WATER

**2023**

Actual vs. Recommended Water Use



# Irrigation Efficiency Best Practices: Understand the Property

1. Conduct irrigation assessment
2. Keep notes on sprinkler schedule
3. Map irrigation

Meters

Backflows

Looped system?

Shut-off valves

Controllers

Rain sensors

Zone map

Maintenance boundaries



AURORA  
WATER



# Irrigation Efficiency Best Practices: Proper Scheduling

WATERING MONTHS	POP-UPS	ROTOR HEADS	ROTARY
	MINUTES PER ZONE/ 3 TIMES PER DAY		
<b>MAY</b> 2 days per week	7	14	22
<b>JUNE</b> 2 days per week	6	12	19
<b>JULY</b> 2 days per week	7	12	20
<b>AUGUST</b> 2 days per week	6	12	19
<b>SEPTEMBER</b> 2 days per week	5	10	16

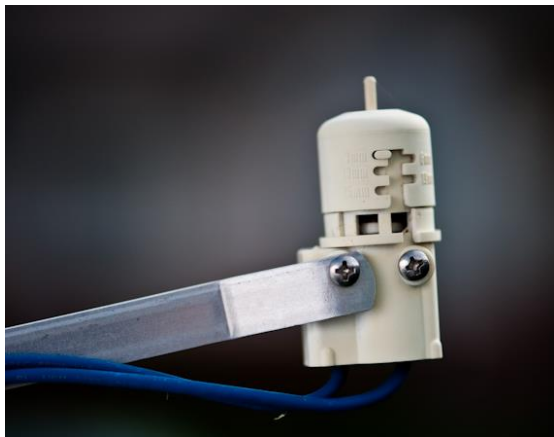
## Cycle and Soak

- Cycle three times
- 1 hour between cycles

## Permanent restrictions

- No watering between 10 a.m. and 6 p.m.
- Max 3 days/week  
(Stage 1 drought: 2 days/week)

# Irrigation Efficiency Best Practices: Efficient Parts



## Efficient parts:

- Pressure regulation
- Check valves
- Rotary nozzles
- Smart systems

## Rebates available:

- Bodies
- Nozzles
- Smart controllers
- Rain sensors



AURORA  
WATER

# Grass Dormancy

- Dormancy is hibernation, not death
- Temporary: no more than **4 weeks**
- Reduces water consumption by approximately 85% while dormant
- No foot traffic, mowing or fertilizing during dormancy
- Follow industry best practices for reviving turf after dormancy
- Visit our grass dormancy page [AuroraGov.org/Dormancy](http://AuroraGov.org/Dormancy)



# Water-wise Landscapes



AURORA  
WATER

# What is Water-wise? Not this.



# This is Water-wise!



# Grass Replacement Incentive Program

- Remove healthy grass and install a water-wise landscape
  - HOA's: Max. \$50,000
    - Any area with healthy turf
  - Residents: Max. \$4,000 (\$1,000 for labor or tool rental)
    - Front yards and streetscapes only
- Pre-approval and application required
- Multi-year payment schedules



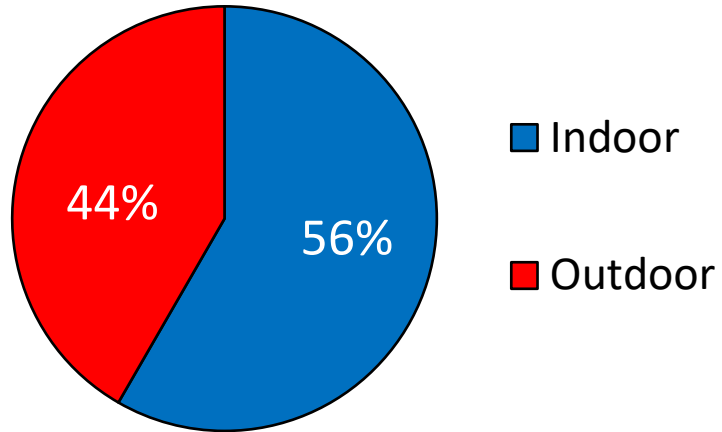
# Indoor Water Use & Best Practices



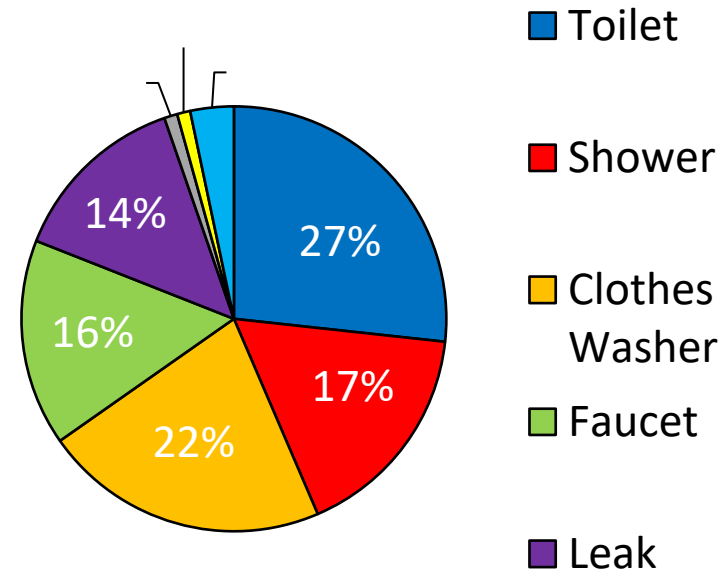
AURORA  
WATER



## Indoor vs Outdoor Use



## Indoor Use Only



1,250 gallons per person per month is considered efficient indoor use in Aurora.

# Indoor Best Practices: Check for Leaks, Replace Old Toilets



Toilet tank parts ~ 5 year life  
Pressure assist tanks ~ 10 year life

Leaks are often silent  
Check toilets for leaks each year

Rebates for 0.8 gpf



**Leaks never get better on their own, they only get worse!**

# Get the Word Out

- Newsletter
- Postcards
- Flyers on doors
- Presentations to boards/residents



AURORA  
WATER

# Other Ways We Help You Save Water

## **Indoors**

- Free indoor water assessments
- Low-income water efficiency program

## **Outdoors**

- Aurora Water-wise Garden – set up a tour
- Free outdoor water assessments
- Free water-wise designs (residential front yards only)
- Water conservation classes
- Recommendations for HOA design guidelines



AURORA  
WATER

What questions do you have?  
What would you like to learn more about?

Water Conservation  
[conservation@auroragov.org](mailto:conservation@auroragov.org)  
303-739-7195

